

PERIODIC MAINTENANCE

WARNING

Never enter any part of the compactor until the unit has been locked-out and tagged-out.

Monthly

- Check for and correct any unsafe conditions in or around the compactor area.
- Clean debris from under/around the compactor/container.
- Remove rear cover(s) and clean debris from chain/sprocket chamber.
- Grease internal bearings. See bearing lubrication section.
- Check chain for proper tension, see Setting Chain Tension section for details.
- Ensure motor/gearbox/gearbox mounting plate bolts are tight.
- Check oil and oil level in planetary gearbox. Oil should be translucent and proper level is to the top of the sight gauge.
- Check auger screw for material build up (banding, plastic wrap, etc.). Remove if necessary.
- Check auger screw for damage and repair if necessary.
- Inspect hard surface welding on the end of the auger fighting. See hard surface welding section for details.
- Check external cords and flexible conduit for chafing, rubbing, deterioration, or damage. Repair/replace as necessary.

NOTICE

Two grease fitting locations on the AST-440

Quarterly

- Check functional operation of controls and options (stop button, timers, lights, auto-lube, etc.).

Annually

- Lubricate electric motor bearings annually per the manufacturer's instructions.
- Replace gear oil in planetary gearbox.
- Marathon recommends:
 - Valvoline EPG Gear Lube 320 rated 15 to 160 degrees Fahrenheit
 - Valvoline EPG Gear Lube 150 rated -22 to 90 degrees Fahrenheit

RamJet® Stationary Auger Compactor Service

MAINTENANCE SCHEDULE FORM

Make copies of below table to record your maintenance on equipment.

MAINTENANCE SCHEDULE										
MONTHLY										
	CHECK FOR UNSAFE CONDITIONS	CLEAN UP	GREASE BEARINGS	CHECK/ SET CHAIN TENSION	CHECK GEARBOX BOLTS	CHECK OIL LEVEL IN GEARBOX	CHECK AUGER FOR MATERIAL BUILD-UP	INSPECT AUGER	INSPECT HARD SURFACE WELD	CHECK CORDS AND CONDUIT
Jan										
Feb										
Mar										
Apr										
May										
Jun										
Jul										
Aug										
Sept										
Oct										
Nov										
Dec										

RamJet® Stationary Auger Compactor Service

MAINTENANCE SCHEDULE FORM (Continued)

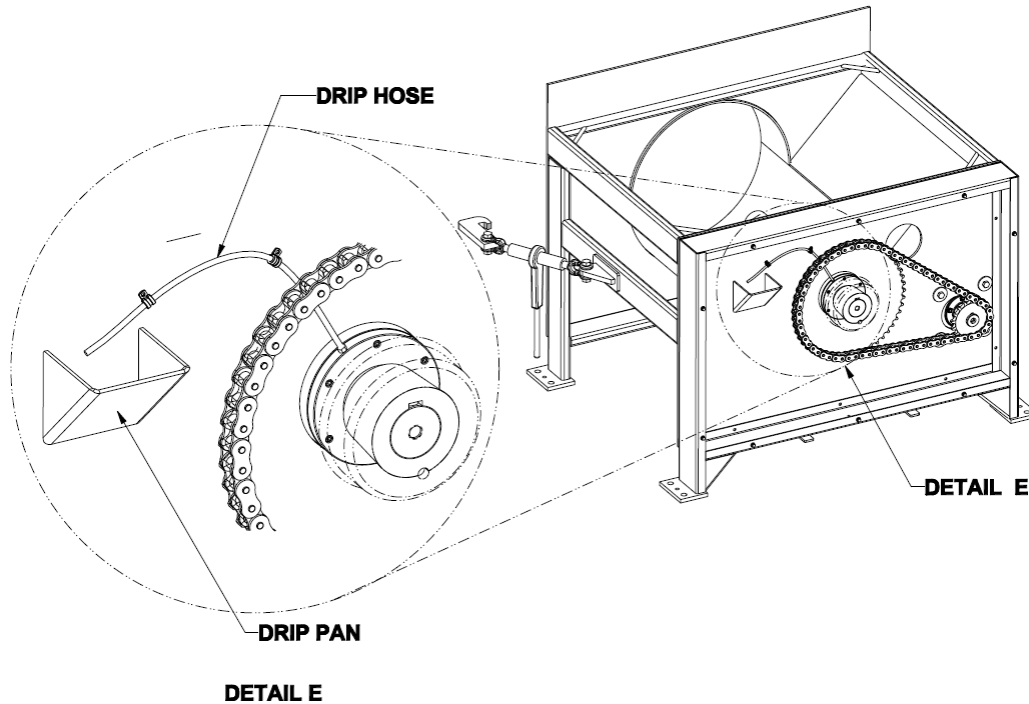
Make copies of below table to record your maintenance on equipment.

MAINTENANCE SCHEDULE			
	QUARTERLY	ANNUALLY	
	CHECK FUNCTIONAL OPERATION OF CONTROLS	LUBRICATE ELECTRIC MOTOR BEARINGS	REPLACE GEARBOX OIL
Jan			
Feb			
Mar			
Apr			
May			
Jun			
Jul			
Aug			
Sept			
Oct			
Nov			
Dec			

BEARING LUBRICATION

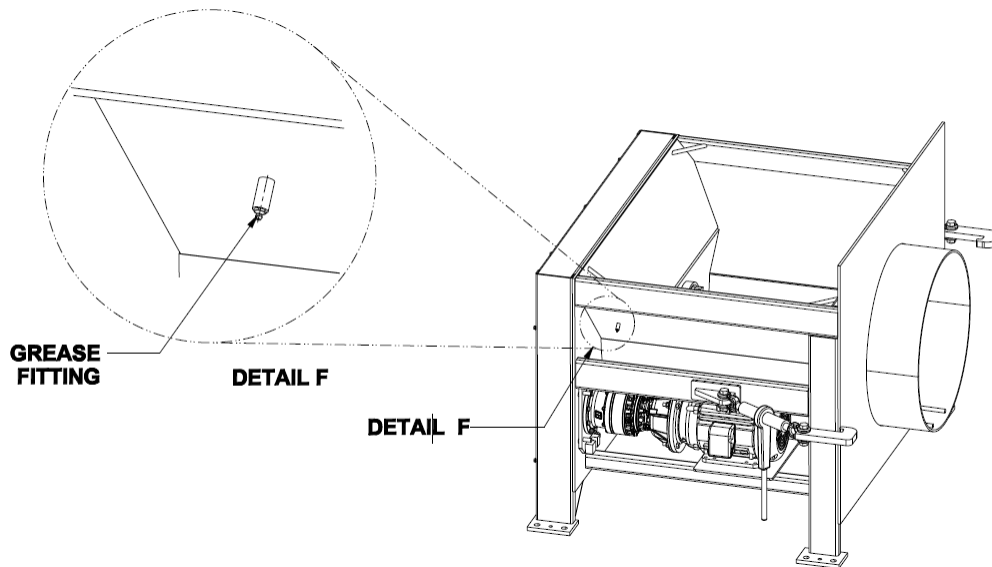
For units equipped with Auto-Lube systems:

1. Fill the grease reservoir per the auto-lube manufacturer's recommendation. The auto-lube system will automatically grease the bearings.
2. Depress the "Auto-Lube" button until grease fresh comes out of the drip hose.
3. Clean the excess grease from the drip pan.



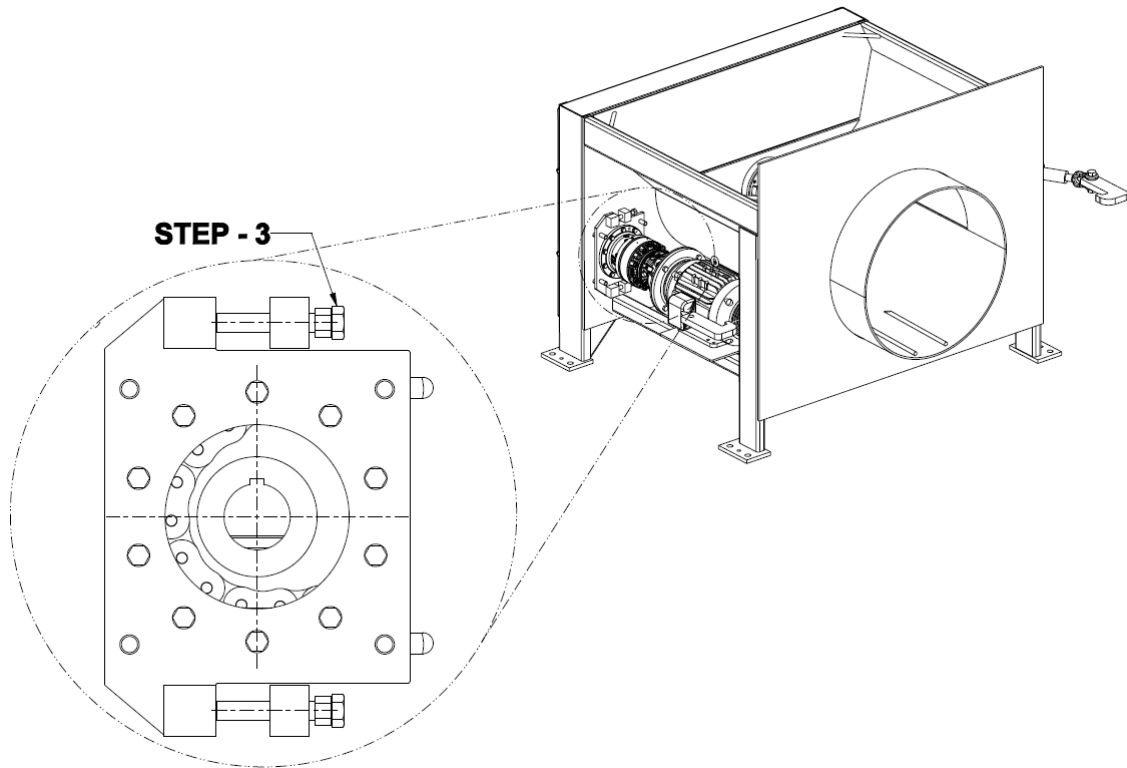
For units not equipped with Auto-Lube systems:

1. Clean the grease fitting. The fitting is located on the right-hand side just above the gearbox.

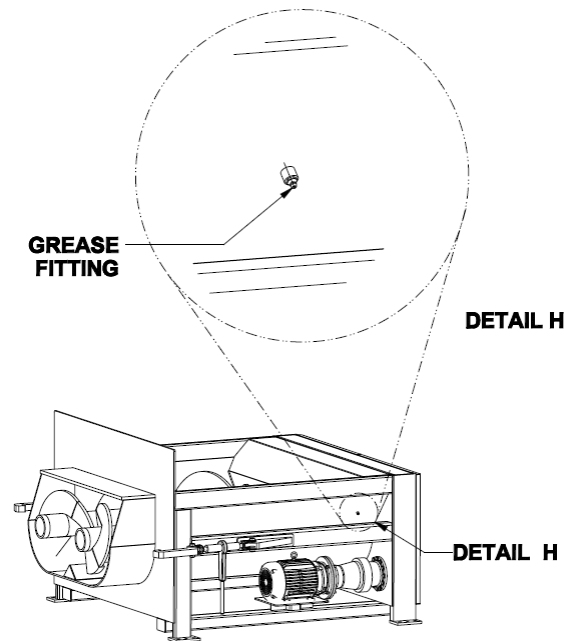


BEARING LUBRICATION (CONTINUED)

- The AST-440 has a grease fitting on both sides of the unit located just above the gearbox.

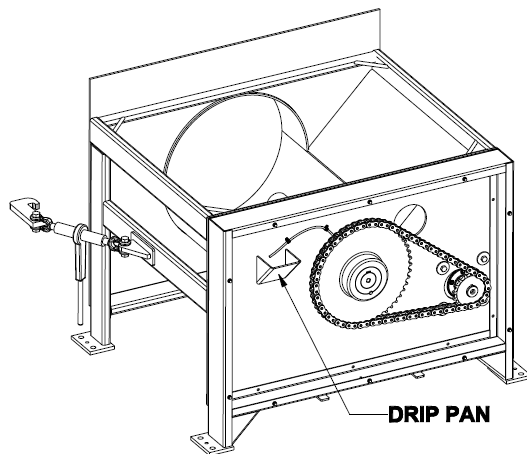


- Add grease to the grease fitting until fresh grease comes out of the drip hose.



BEARING LUBRICATION (CONTINUED)

4. Clean off grease fitting.
5. Clean out excess grease from drip pan.



CHAIN TENSION AND ADJUSTMENT

WARNING

Never enter any part of the compactor until the unit has been Locked-out and Tagged-out.

WARNING

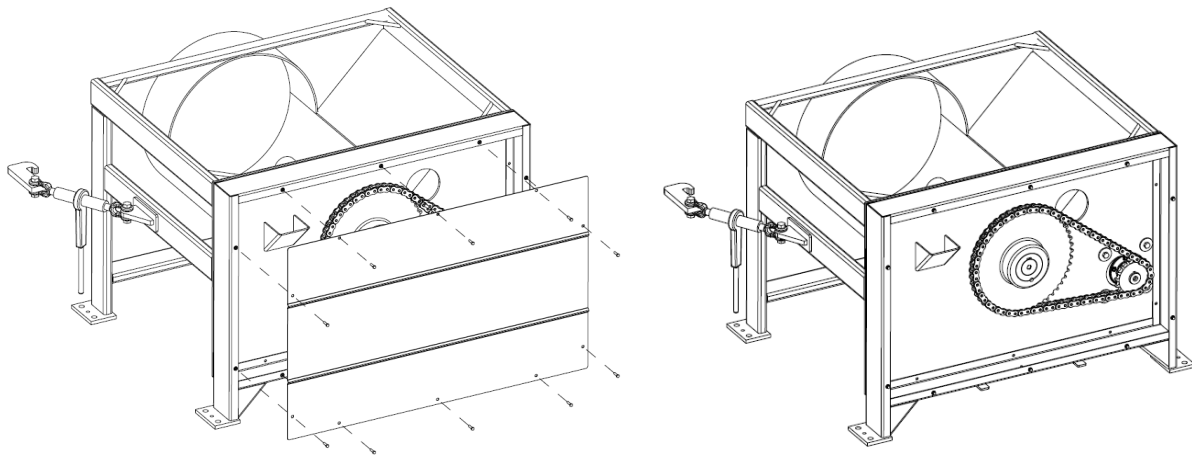
Never remove rear cover until the unit has been locked-out and tagged out.

WARNING

Never service/adjust the chain until the unit has been locked-out and tagged out.

Chain/Sprocket Layout

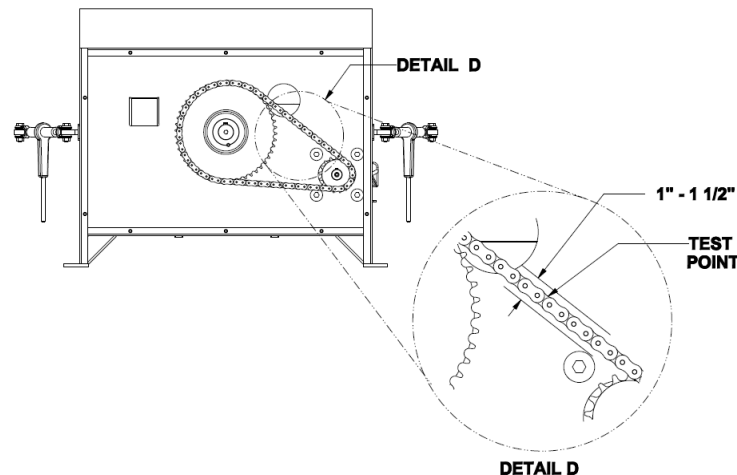
1. To access the sprockets and chain, the rear cover must be removed.



Note: The chain on the AST-440 model is non-adjustable.

Proper chain tension

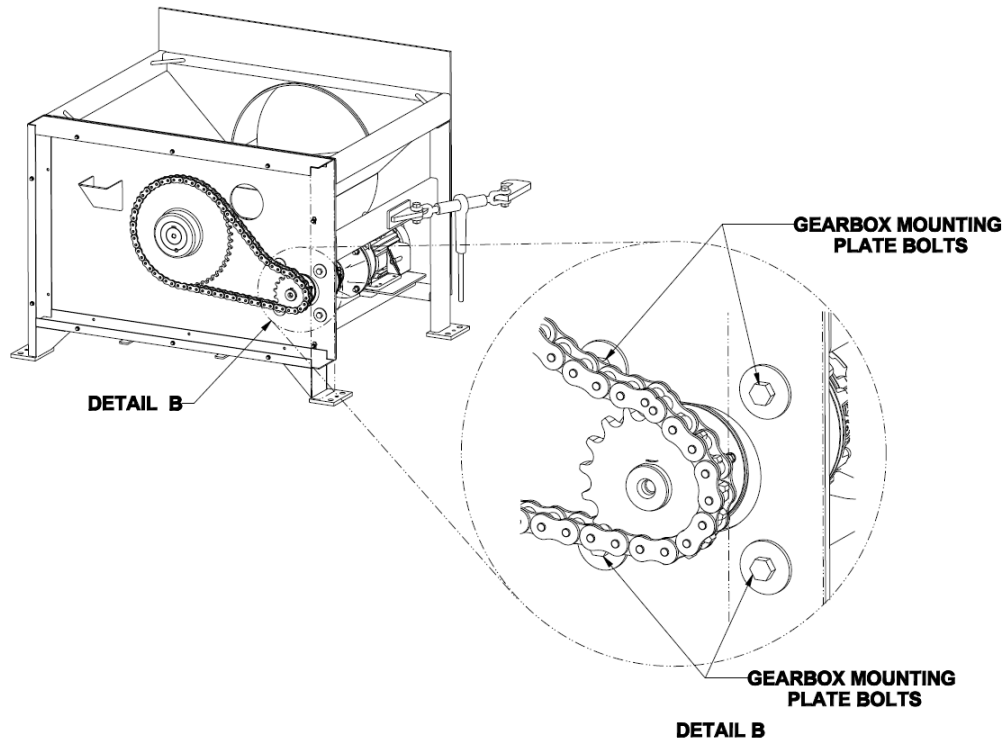
The chain should have 1" – 1 1/2" of deflection, on the top side of the chain halfway between the sprockets, when finger pressure is added to the chain.



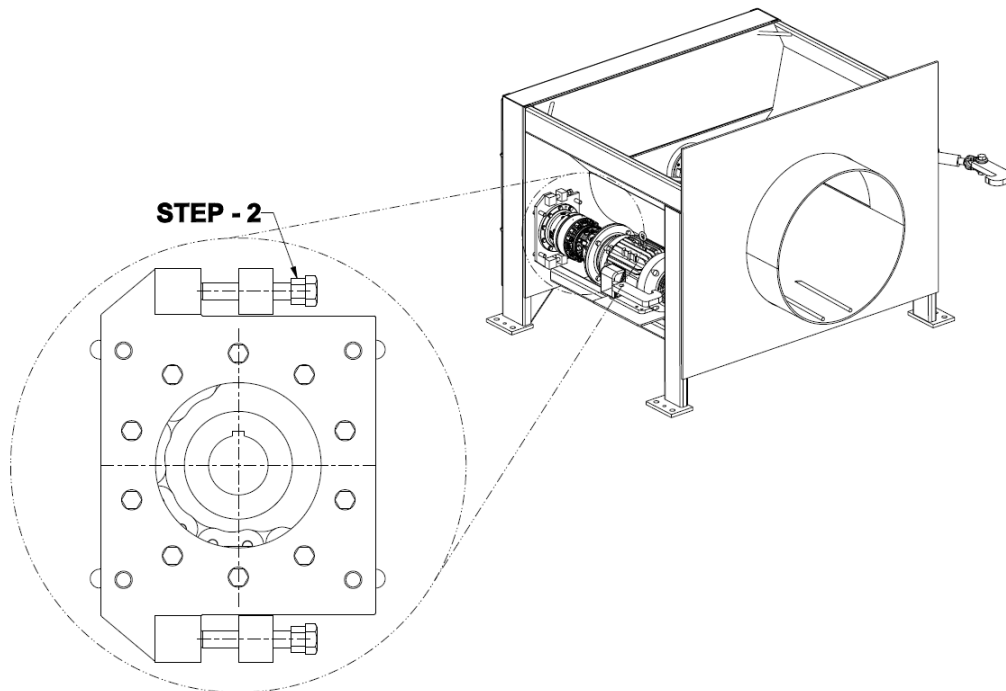
CHAIN TENSION AND ADJUSTMENT (CONTINUED)

How to adjust chain tension:

1. Loosen (4) gear box mounting plate bolts.

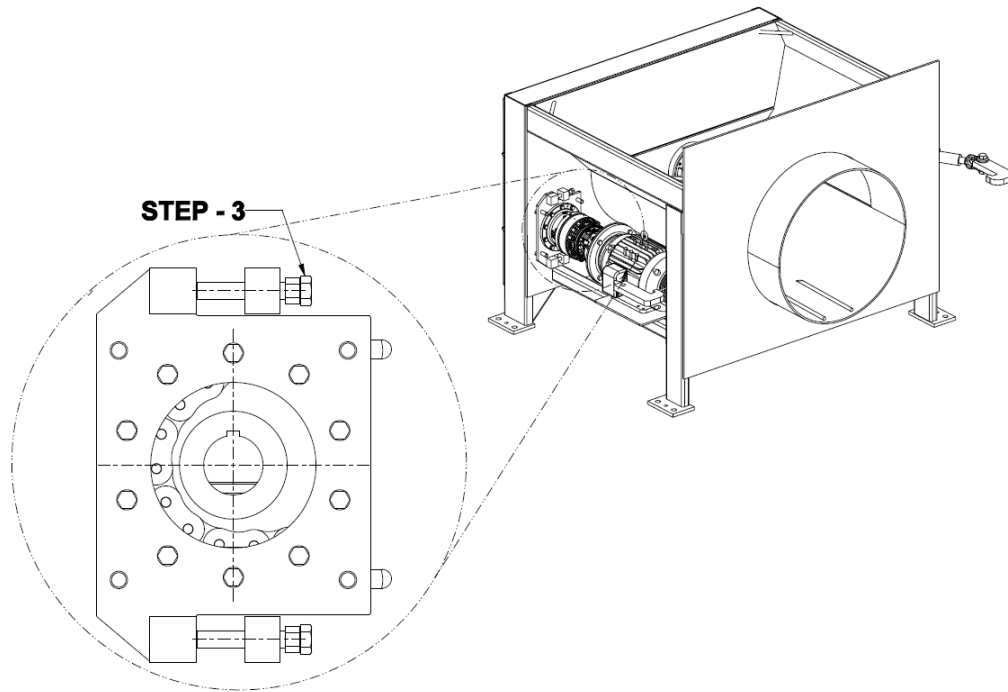


2. Loosen (2) jam nuts on the adjustment bolts.

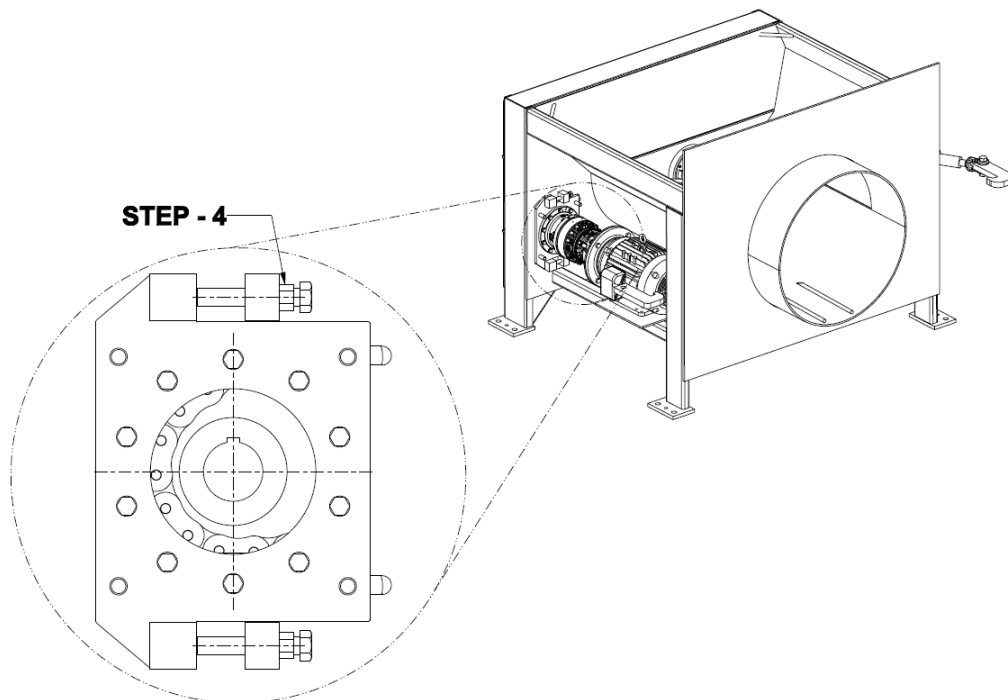


CHAIN TENSION AND ADJUSTMENT (CONTINUED)

3. Tighten (2) adjustment bolts until the proper tension is achieved.



4. Tighten (2) jam nuts on the adjustment bolts.



CHAIN TENSION AND ADJUSTMENT (CONTINUED)

5. Tighten (4) gearbox mounting plate bolts.

